



SL-DS02

# SMART LIFE SMOKE ALARM



## Product Description

The SL-DS02 household WIFI photoelectric smoke alarm (alarm) detects fire by sensing smoke. When smoke in the room reaches a certain concentration, the alarm will send out sound and light warning alarm. This alarm is applicable for residential houses. Standard implemented: EN 14604:2006/AC:2008

## Product Feature

- Single-light source detection, free from false alarm due to dusts, insects or moisture.
- Professional maze design, quick sense of fire.
- App notification function, check battery level and operating status anytime.
- Fire-retardant plastic case with glossy surface treatment.
- Dismantle-free cover design for cleaning.
- Blind twist design +3M double-sided glue quick installation.

## Specification

- Model: SL-DS02
- Operating voltage: DC3V (CR123A)
- Battery Capacity: 1400mAh
- Wireless Protocol: Wi-Fi + Bluetooth
- Frequency Range: 2.412-2.472GHz
- Versions: 802.11b/g/n
- RF Conducted Power: 11b:17dBm ; 11g:15dBm ; 11n:13dBm
- Average Quiescent Current: <9uA
- Alarming Mode: Sound + Light + App notice
- Alarming Sound Level: 265dB (at 3m)
- Operating Humidity: 595%RH (non-condensation)
- Battery Life: 2 years (typical value)
- Operating Temperature: -100~550
- Installation: Ceiling-mounted (screwing or 3M gum)
- Size (L\*W\*H): 76mm\*76mm\*28.5mm
- Standard: EN 14604:2006/AC:2008

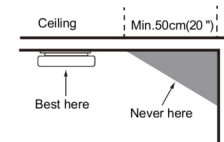
## Installation

- Place the mounting plate on the desired installation location and mark where the holes should be drilled.
- Drill two holes with a diameter of 4 millimetres. □The distance between them is 42 millimetres□.
- Push the plastic plugs into the holes.
- Insert the screws into the mounting plate, and tighten them firmly into the plugs.
- Fasten the smoke alarm on the mounting plate by twisting clockwise.
- Fasten the smoke alarm when the holes on the mounting plate and smoke alarm are aligned.
- Press the test button to check whether the smoke alarm operation normally, the smoke alarm is abnormal and can not be used if no sound.
- Plastic plugs size:M4\*20
- Screw size:M2.6\*16

- 2 -

## Notes

- The smoke alarm should be installed in the middle of the room ceiling;
- The smoke alarm should only be installed indoor and at least one alarm in each room;
- The smoke alarm should be at least 150cm away from lights, exhaust fan, air conditioner and air inlet/outlet;
- Do not install the alarm in bathroom or those places with water drops;



## Trouble Shooting

Failure	Possible Reason(s)	Measure(s)
Alarm immediately upon power on	1. A lot of smoke indoor 2. Internal circuit damaged	1. Power on the device again after smoke removed 2. Return the device for repair
Red light and Beep one time per 40s after powered on	1. Low battery voltage	1. Replace battery
Red light and Beep twice per 40s after powered on	1. Internal circuit damaged	1. Return the device for repair
No alarm when testing or no sound	1. Battery installed incorrectly 2. Low battery voltage 3. Internal circuit damaged	1. Check and install the battery again 2. Replace battery 3. Return the device for repair

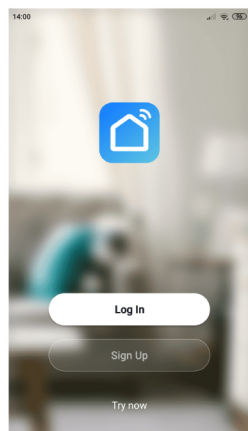
## Care and maintenance

- 1.After the alarm is installed and put into use, press the test button to test the detector every week .
- 2.Clear smoke alarms: clean the smoke alarms at least once a year to keep them clean from the accumulated dust.

- 3 -

## APP Instruction

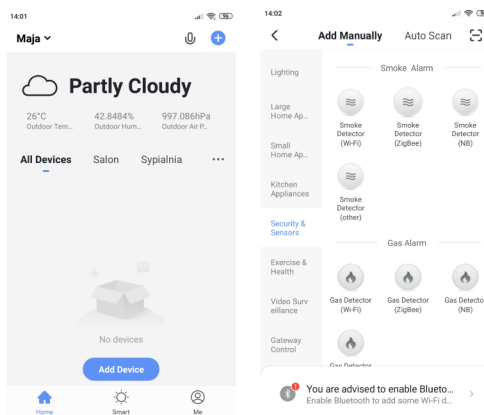
1. Download "smart life" APP  
Search "smart life" in application market to download and install the App.
2. Registration  
Click the APP and register an account according to the wizard.
3. Add or Delete Device  
Click the APP and log in, click Add Device → Security Sensor → Sensor (Wi-Fi)



- 4 -

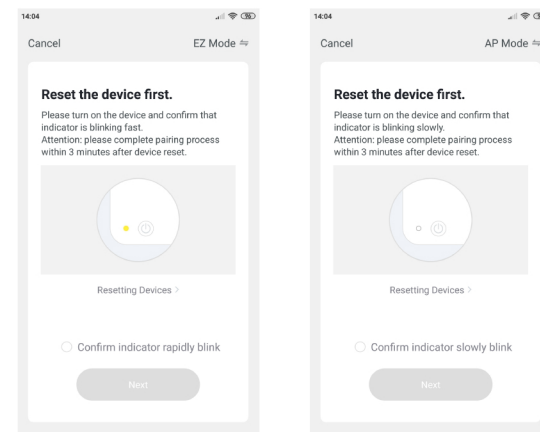
## Add or Delete Device

Click the APP and log in, click Add Device → Security Sensor → Sensor (Wi-Fi)



Install the battery to make the power on, press the button on the side of the device and hold on for 5 seconds to enter into the Wi-Fi configuration state (the red standby indicator flashes fast indicates that it is in the EZ mode configuration mode. If the indicator light flashes slowly, it indicates it is in the AP configuration mode). There are two modes displays in the APP interface which can be switched to each other before configuration start. As below:

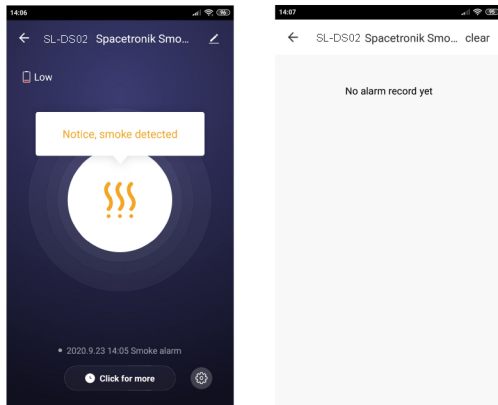
- 5 -



Input the Wi-Fi SSID and password according to the APP prompt and start the connection, wait for 60 seconds to complete the device's network configuration and its connection to the Tuya cloud server, synchronization with the APP. It will jump to the APP operation and monitoring interface directly when the device is added completely.

You can modify the device name or share the device to other people through the APP directly. The device operation interface can check its status, alarm, offline and alarm release, etc., check history records and other setting options.

- 6 -



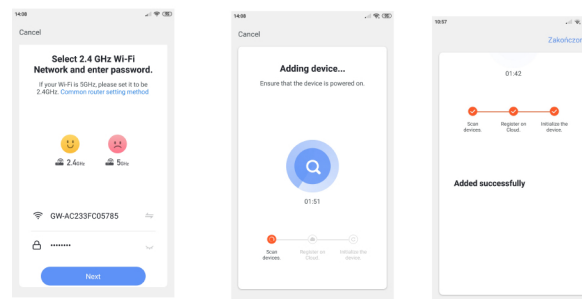
## Remarks

Ensure the device and APP work under the same Wi-Fi network to make sure the validity of the device which is set through EZ MODE or AP mode, then the device information recognized by the APP is valid. When the EZ MODE mode does not work due to Wi-Fi network configuration condition, use AP mode to configure the device and APP.

- 7 -

## EZ Mode

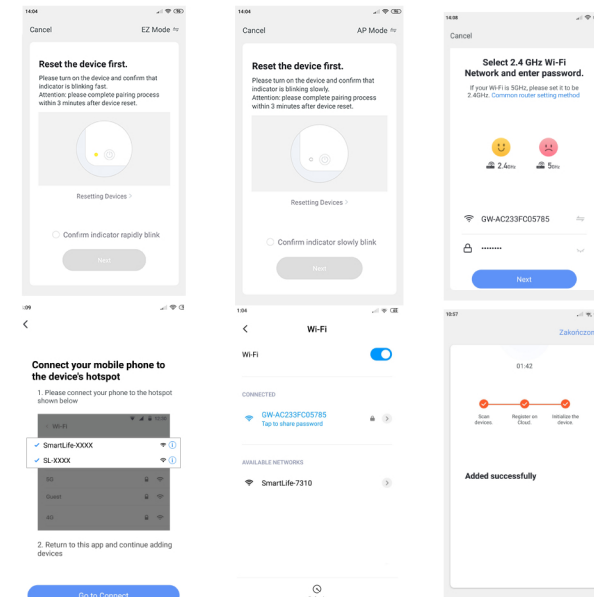
When configuring in EZ mode, make sure that the Wi-Fi network connect to the Internet normally, then ensure the APP and the device work in the same Wi-Fi network. Input the SSID and password to connect the device with cloud server to accomplish the configuration. If need to use different Wi-Fi network, choose "Change network" through the APP.



## AP Mode

When configuring in AP mode, make sure that the Wi-Fi network connected to the Internet normally, then ensure the APP and the device work in the same Wi-Fi network. Input the SSID and password to run the APP (mobile or tablet) by connecting to the Wi-Fi network "SmartLife-xxxx" in the APP mode (select by the Wi-Fi network list), return to the APP when connected successfully, it will complete configuration automatically.

- 8 -

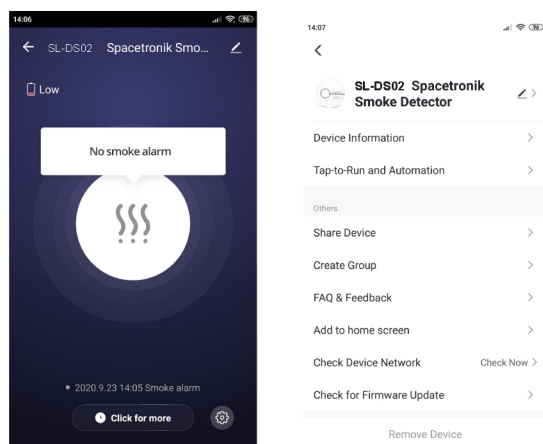


- 9 -

When the device is added to the Tuya smart user account, the indicate light goes out, the APP jumps to the operation interface, indicates that the device is added successfully. If not succeed, repeat the steps until add it successfully.

## Delete device

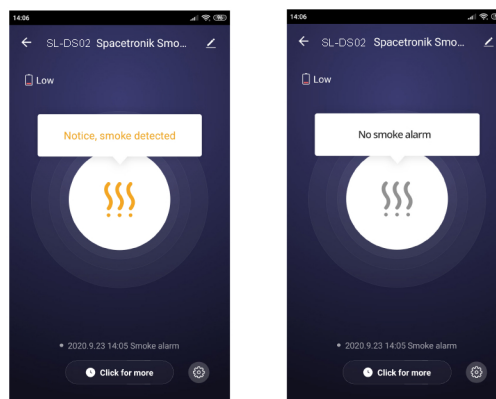
Select the "Edit" icon to enter into the operation interface of the device. Click "Remove device" to delete it.



- 10 -

## Smoke Detection Alarm

Once the detector detects that the smoke concentration reached to the alarm preset degree, red LED will flash rapidly, the horn will beep shortly and quickly and display different status according to the states. The alarm data is delivered to the cloud server, the cloud server will transmit the alarm information to the APP simultaneously. The APP interface displays as below:



## Other operations

Other operations of the device and APP, please pay attention to the design and updates of the APP and the device.

- 11 -

## Indicator States Instruction

### 6.1 Normal Operating State

Under normal operating state, the red indicator flashes one time per 40 seconds.

### 6.2 Alarming State

When smoke concentration reaches alarming point, the red indicator flashes consecutively and the alarm sends out beeping alarm.

### 6.3 Testing State

Short-pressing the test button, the red indicator will flash consecutively, the alarm will send out three beeping sound, a period later, it will automatically stop.

### 6.4 Low Power Failure State

Under low power failure state, the red indicator flash once meanwhile beep once per 40 seconds.

### 6.5 Device Failure State

The red indicator flashes twice meanwhile beep twice per 40 seconds.

### 6.6 Wifi Networking State

Red LED will slowly flash when power on the alarm and long-press the test button more than 5 seconds.

### 6.7 Wifi Not Networking State

Red LED will quickly flash when power on the alarm and long-press the test button more than 5 seconds.

### 6.8 Wifi Networking Failure

The unit will generate three "chirps" with the red LED flashes thrice every 40s when the unit goes into wifi networking fault mode.

### 6.9 Hush State

When the alarm is at alarming state, users can long-press the test button to make the alarm enter hush state, then the alarm will not send out sound alarm, 9 minutes later, if the smoke concentration is still above the alarming point, the alarm will start to send out sound and light alarm again.

Hereby Spacetronik Sp. z o.o. declares under our sole responsibility that the product SL-DS02 is in conformity with following directives: RED (2014/53/EU), RoHS (2011/65/EU + 2015/863/EU). Full document (declaration of conformity) is available for download from [www.spacetronik.pl](http://www.spacetronik.pl).

The WEEE symbol (the crossed-out wheeled bin) using indicates that this product is not home waste. Appropriate waste management aids in avoiding consequences which are harmful for people and environment and result from dangerous materials used in the device, as well as improper storage and processing. Segregated household waste collection aids recycle materials and components of which the device was made. In order to get detailed information about recycling this product please contact your retailer or a local authority.

Made in P.R.C for:  
Spacetronik Sp. z o.o.  
Wisniowa 36, 64-000 Koscian, Poland



- 12 -