



INSTRUCTION MANUAL SMART LIFE CO SENSOR

SL-DC01



MADE IN P.R.C. FOR
SPACETRONIK SP. Z O.O.
WIEŚNÓWA 36, 64-000 KOŚCIAN, POLAND
INFO@SPACETRONIK.EU
WWW.SPACETRONIK.EU

Product Description

Intelligent Wi-Fi carbon monoxide detector is designed with Wi-Fi networking technology and is used to detect carbon monoxide gas. The detector adopts high-performance electrochemical sensor, with sound and light alarm output. Alarm relay output, can work with electromagnetic valve. It has the characteristics of high stability and sensitivity. The alarm information is transmitted to the user APP through the cloud, which is simple and clear.

Electrical Specifications

1. Working Voltage: AC 100~240V 50/60 Hz
2. Average Consumption: <1,5 W
3. Alarm Sound: 85 dB/1 m
4. Alarm concentration:
 - 50 PPM, alarm withing 60~90 minutes
 - 100 PPM alarm within 10~40 minutes
 - 300 PPM, alarm within 3 minutes
5. Networking: WiFi 2.4G - 802.11 b/g/n
6. Control Output: Solenoid valve output (12 V/100 kPa)
7. Alarm Output: Relay output NC/NO optional (Default NC)
8. Working Environment: -10° C ~ +50° C
9. Working Humidity: 10% ~ 95% RH

Appearance Instruction



- Green LED Power / WiFi Status
- Button: Test / Reset Button
- Yellow LED: Fault
- Red LED: Alarm
- Buzzer: Alarm Buzzer

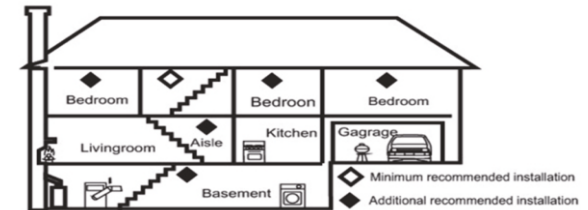
- 2 -

Warm Prompt

1. The shell surface has a slight fever while working in the normal condition.
2. Please remove the detector while house decoration.
3. The semi-conductor of the detector have 5-year lifetime, please replace detector timely.
4. For your safety, please use detector properly, be vigilant to prevent occurrence of danger.
5. The detector cannot detect natural gas (methane), propane, butane or other combustible gases.
6. Clean it once a month with household vacuum cleaner and soft brush.
7. Do not wipe the detector with detergent or solvent. Avoid spraying air freshener, hair spray paint or other aerosol on its accessories.
8. Keep the indoor air circulation. Strengthen your fire awareness in everyday life.

Functional Diagram

Single-storey house: in order to increase safety factor, it is recommended install one detector in each bedroom, install one detector in the place 6m away from the fire chimney and gas equipment. Multi-storey house: in order to increase the safety factor, it is recommended to install at least one detector in each bedroom, at least one detector in the basement, and one detector at the place 6m away from the fire and gas equipment.



- 3 -

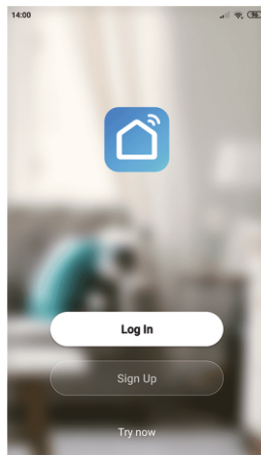
APP Instruction

1. Download "smart life" APP

Search „smart life” in application market to download and install the APP.

2. Registration

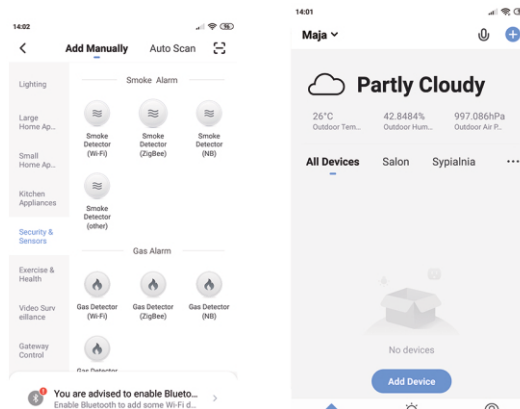
Click the APP and register an account according to the wizard.



- 4 -

Add Device

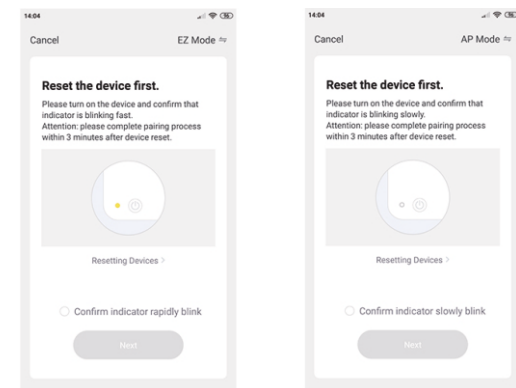
Click the APP and log in, click [Add Device] --> [Security and Sensors] --> [Gas Detector (Wi-Fi)].



Power on the detector, the buzzer „beeps” one time, circuit enters into preheating state. The yellow LED flashes 1 time per second for 3 minutes and enter into normal working status. Please do not test gas when the detector is preheating. The green LED will keep on flashing if the detector doesn't connect to the cloud server. Press [Test/Reset] button in the detector, and hold on 5 seconds to enter into Wi-Fi configuration state.

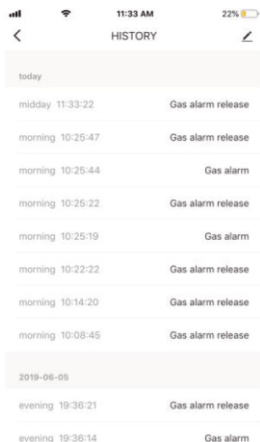
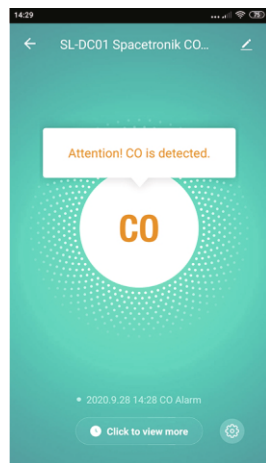
- 5 -

The green LED flashes fast indicates that it is in **EZ** mode configuration mode. If the green LED flashes slowly, it indicates it is in the **AP** configuration mode. There are two modes displays in the APP interface which can be switched to each other before configuration start. As below:



Input the Wi-Fi SSID and password according to the APP prompt to start the connection, wait about 60 seconds to complete the device's network configuration and its connection to the Tuya cloud server, synchronization with the APP. It will jump to the APP operation and monitoring interface directly when the device add completely. You can modify the device name or share the device to other people through the APP directly. The device operation interface can see its status, alarm, offline and alarm release, etc., check history records and other setting options.

- 6 -



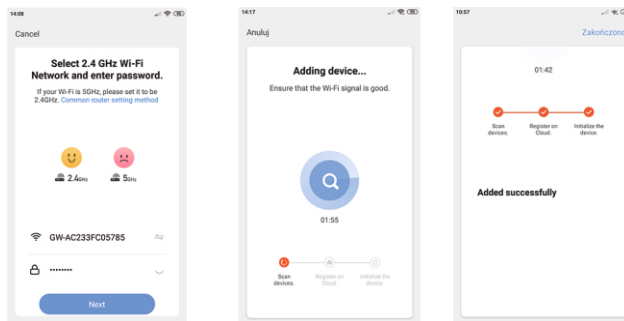
Remarks:

Ensure the device and APP work under the same Wi-Fi network to make sure the validity of the device, which is set through **EZ mode** or **AP mode**, then the device information recognized by the APP is valid. When the **EZ mode** does not work due to the Wi-Fi network condition, choose **AP mode** to complete the configuration.

- 7 -

EZ Mode

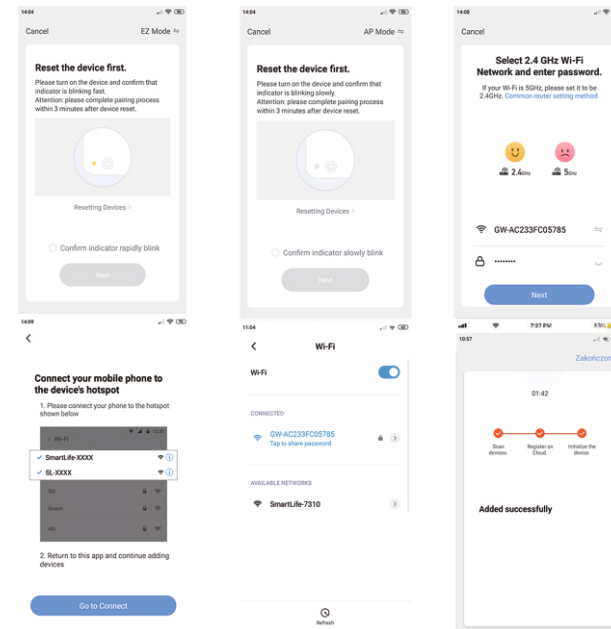
When configuring in EZ mode, make sure that the Wi-Fi network connect to the Internet normally, then ensure the APP and the device work in the same Wi-Fi network. Input the SSID and password to connect the device with cloud server to accomplish the configuration. If need to use different Wi-Fi network, choose „Change network” through the APP.



AP mode

When configuring in AP mode, make sure that the Wi-Fi network connect to the internet normally, then ensure the APP and the device work in the same Wi-Fi network. Input the SSID and password, the device use to run the APP (mobile or tablet) connect to the Wi-Fi network "SmartLife-xxxx" in the AP mode (select by the Wi-Fi Network list), it will return to the APP when connect successfully and complete the configuration automatically.

- 8 -

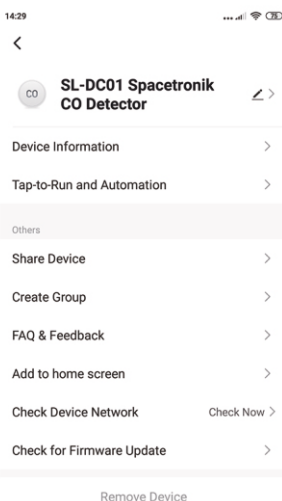
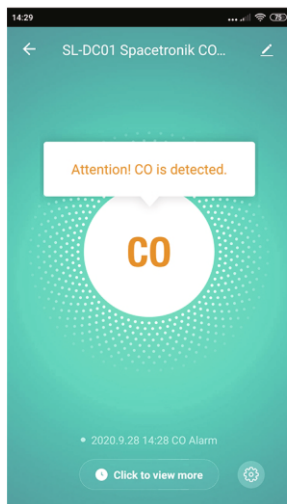


- 9 -

When the device is added to the Tuya smart user account, the LED goes out, the APP jumps to the operation interface, indicates that the device is added successfully. If not succeed, repeat the steps until add it successfully.

Delete Device:

Select the [Edit] icon to enter into the operation interface. Click [Remove device] to delete it.



- 10 -

Leakage Detection Alarm

When the detector detects the concentration reaches the preset carbon monoxide degree, red led flashes, solenoid output, relay output and displays different status according to the states. The alarm data is pushed to the cloud server, the cloud server pushes the alarm information to the APP simultaneously. The APP interface displays as below:

Other Operations

Other operations of the device and APP, please pay attention to the design and updates of the APP and the device.

Light State & Product Test

Status	Light	Sound	Valve Output	Relay Output
Test	Yellow, green and red led flash alternately	Yes	Yes	Yes
Preheat	Yellow led flash	No	No	No
Fault	Solid yellow led	No	No	No
Standby	Green on (in network), green led flash (not configure network)	No	No	No
Alarm	Red led flash	Yes	Yes	Yes

Test button of this detector is used for test if the LED indicator, buzzer, relay, and solenoid valve can work properly. Press button shortly, all the LED flashes alternately, buzzer alarms, solenoid and relay output. Repress the button to exit the test mode. The test lasts 30 seconds, then exit the test mode automatically. There is self test function in the APP to accomplish the test for your choice.

Notice: The green LED will flash if not connect to the network cloud succeed.

- 11 -

1. Install the detector near the bedroom or living area that carbon monoxide leak might happen, confirm the alarm voice can be heard when you sleep.
2. It is better not to install the detector in the garage, kitchen and boiler room that may cause false alarm.
3. Avoid the area that are dirty, dusty or greasy environment, which will damage the sensor and make it work improperly.

Wiring Instructions

SIG-: Solenoid valve negative electrode
SIG+: Solenoid valve positive electrode
Out 1/Out 2: Relay NC(NO)/COM
AC power: AC 100V~240V input



Frequency band: 2412~2472 MHz
Maximum radio-frequency power: 17 dBm

Hereby Spacetronik Sp. z o.o. declares under its sole responsibility that the product SL-DC01 is in conformity with following directives: RED (2014/53/EU), RoHS (2011/65/EU + 2015/863/EU). Full document (declaration of conformity) is available for download from the website www.spacetronik.eu.

The WEEE symbol (the crossed-out wheeled bin) using indicates that this product is not home waste. Appropriate waste management aids in avoiding consequences which are harmful for people and environment and result from dangerous materials used in the device, as well as improper storage and processing. Segregated household waste collection aids recycle materials and components of which the device was made. In order to get detailed information about recycling this product please contact your retailer or a local authority.

Made in P.R.C. for:
Spacetronik sp. z o.o.
ul. Wiśniowa 36, 64-000 Kościan, Poland
info@spacetronik.eu
www.spacetronik.eu



- 12 -